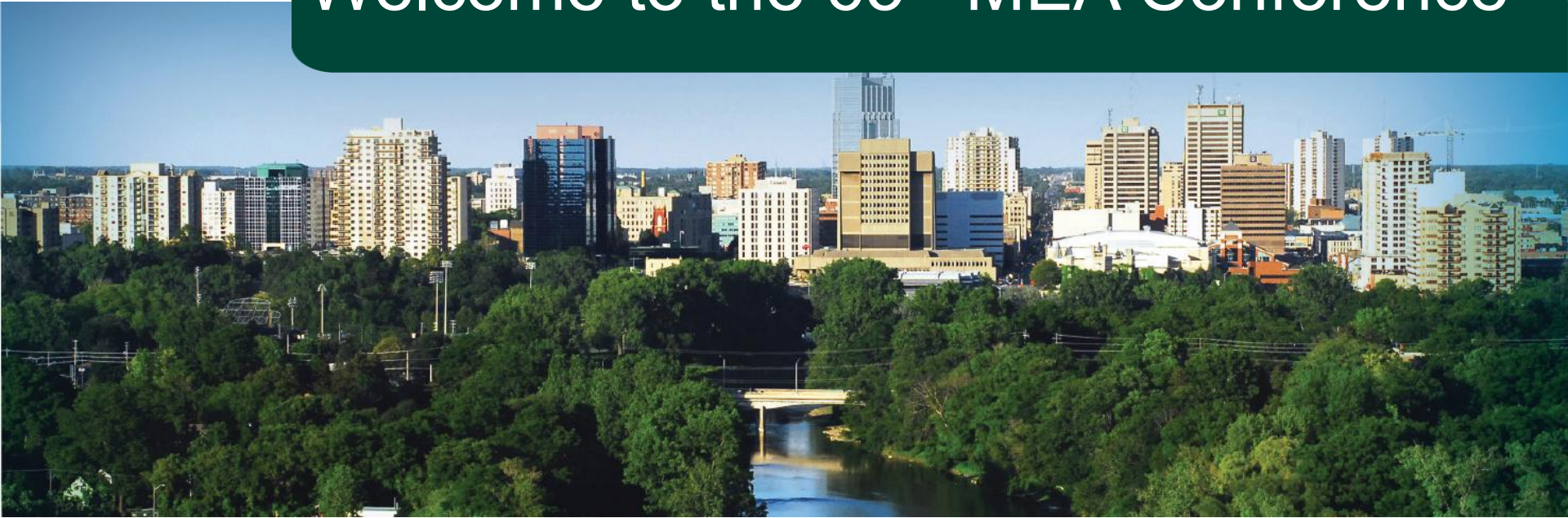


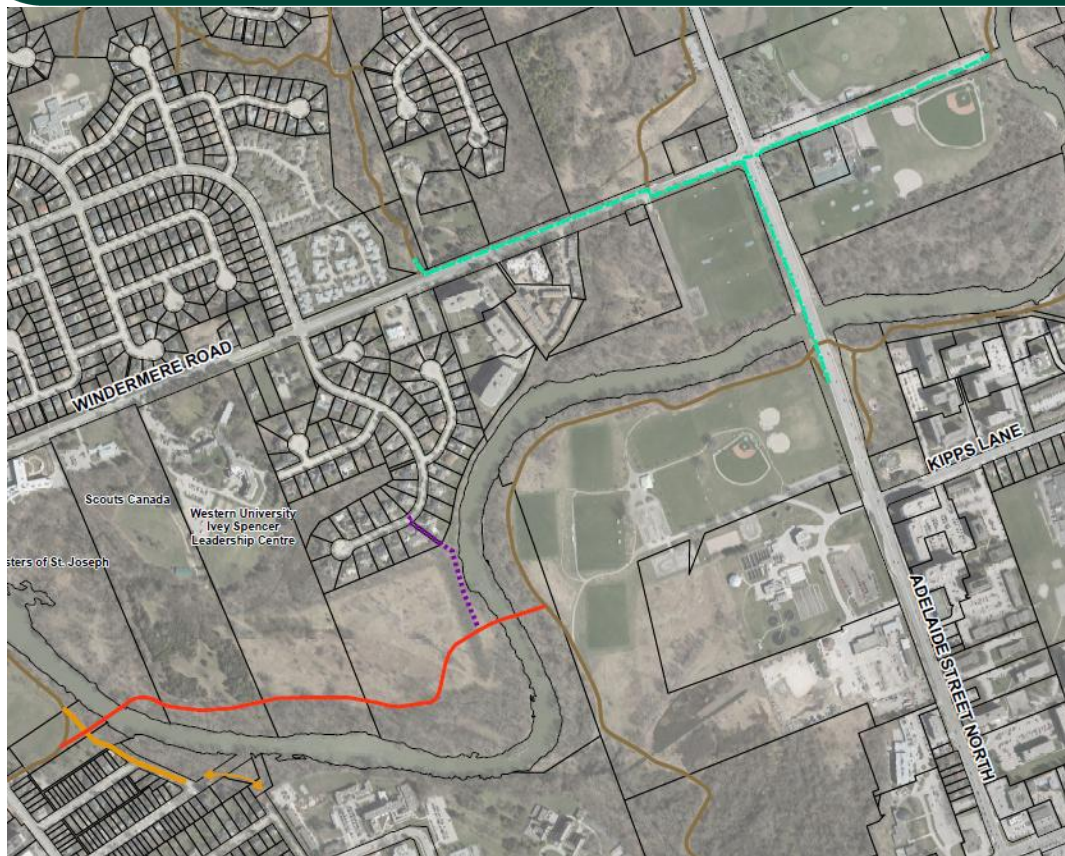


Welcome to the 65th MEA Conference



Stephanie Page: The Thames Valley Parkway – North Branch Connection
Thursday, November 13th 2025

EA Completed in 2017



City of London

Thames Valley Parkway North Branch Connection,
Richmond Street to Adelaide Street
Municipal Class Environmental Assessment

Preferred Alternative Alignment (Route A) Secondary Route Connection Options Figure 1

-  Property Parcels
-  Existing Thames Valley Parkway
-  TVP Preferred Alignment (Route A)
-  Glenora Neighbourhood Connection
-  Emergency Access/ Tetherwood Neighbourhood Connection
-  North London Neighbourhood Connection

0 62.5 125 250
Meters
1:5,000



MAP (DRAWING) INFORMATION:
DATA PROVIDED BY THE CITY OF LONDON
MAP CREATED BY BLP
MAP CHECKED BY: BLP
MAP PREPARED AND ISSUED DATE: 2017

FILE LOCATION: SUBMITTALS - Thames Valley Parkway/2017

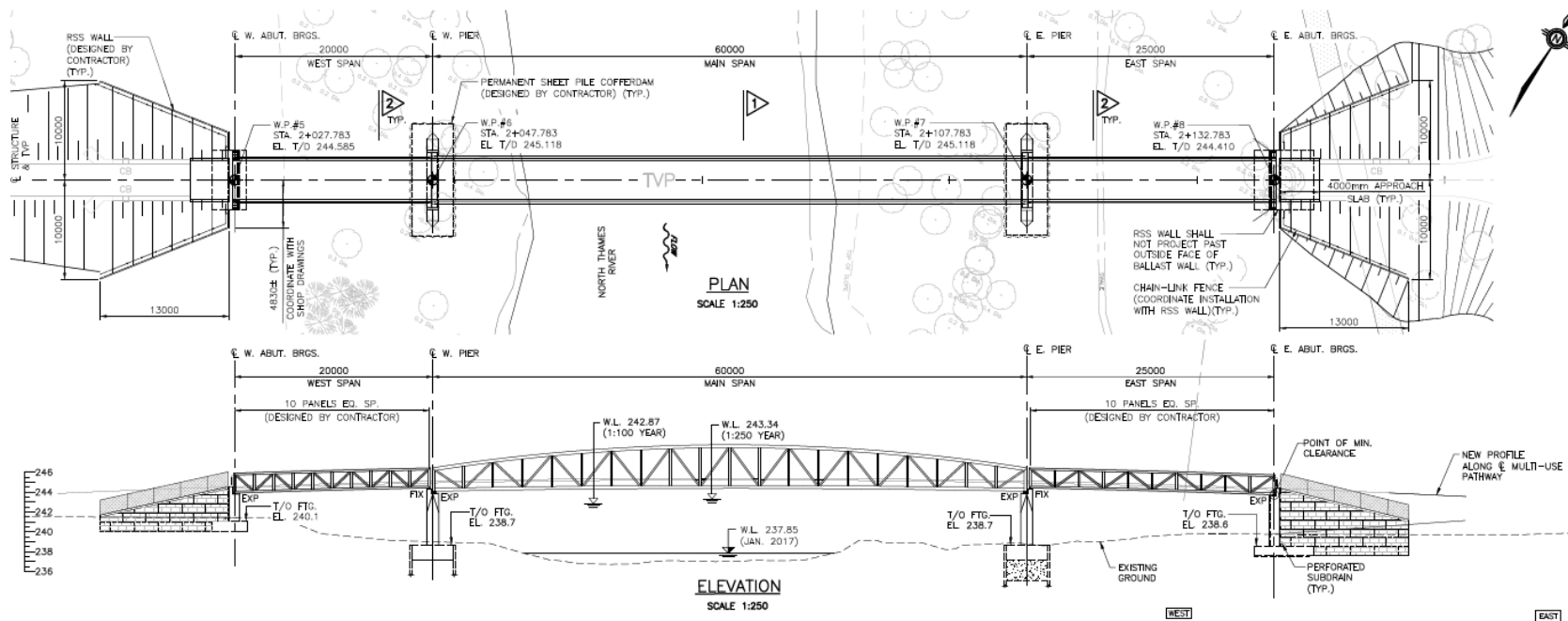


PROJECT: 14-1084
DESIGN: PAUL
DATE: 04-03-15

Land Acquisitions



Design



Construction



Construction



Construction



Design and Construction Challenges

- Watermain location
- 1050 diameter concrete structure from north of the City



Design and Construction Challenges

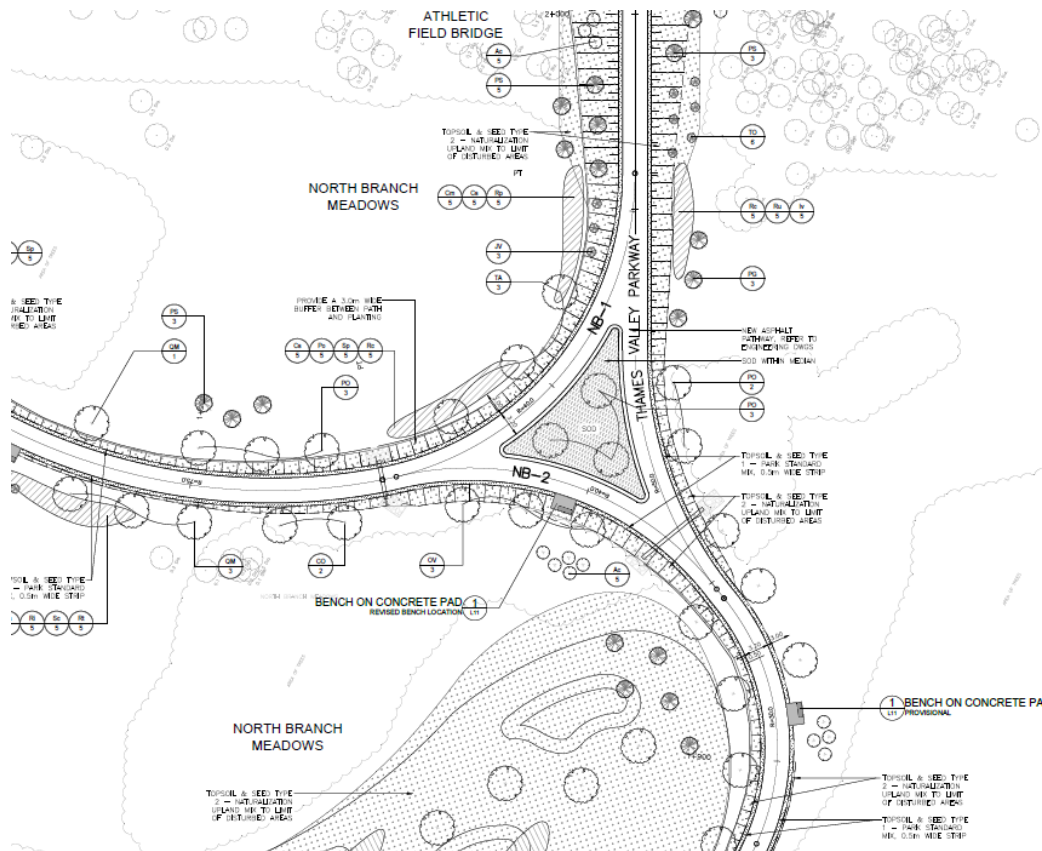
- Construction in the floodplain





Design and Construction Challenges

- Environmental protection, landscape design, restoration and habitat compensation
- Species at risk mitigation (trees and animals)
- 253 snapping turtle eggs rescued exclusionary fencing – lesson learned



Design and Construction Challenges

- Designing for adjacent property owners
- COVID
- Bridge erection, crane placement / construction access
- Budget
- Archeology Stage 4 investigation
- Boulders blocking sheet piling



Wrapping Up Construction!



Wrapping Up Construction!



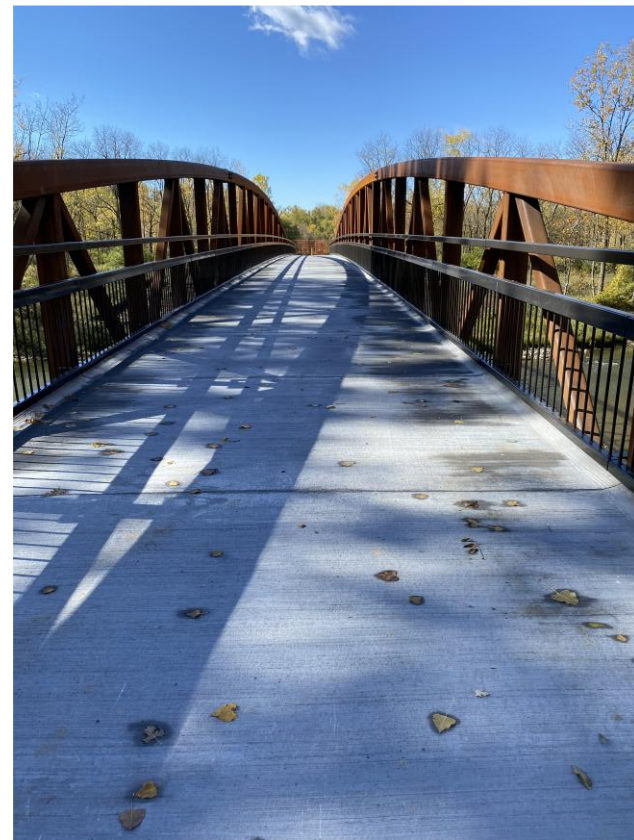
Wrapping Up Construction!





Teamwork and Thanks

- City of London's Transportation Division partnership with Parks
- Dillon Consulting Limited
- J-AAR Civil Construction Group
- All property owners who supported this project with a special note to Scouts Canada for granting us access
- Everyone who helped on this project and to all Londoners who continue to enjoy and support our parks!





Questions?

