

November 27, 2019

Bruce Power's Major Component Replacement Program

Eric Chassard

Executive Vice President, Projects and
Engineering

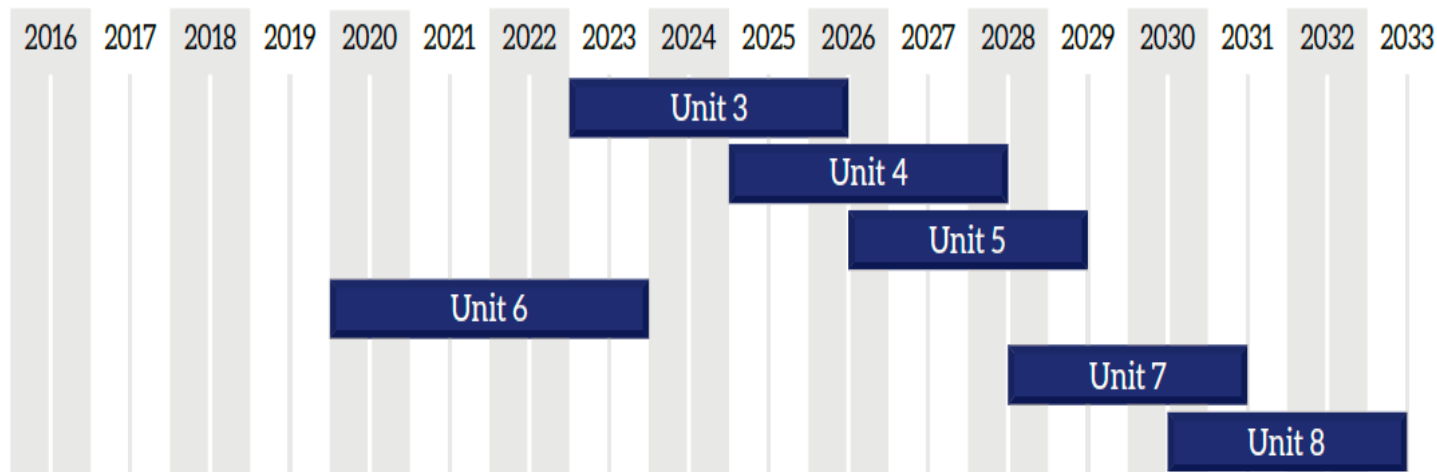




Major Component Replacement

- The MCR Project focuses on the replacement of key reactor components in Units 3-8 including steam generators, pressure tubes, calandria tubes, and feeder tubes.

Bruce Power Refurbishment Schedule



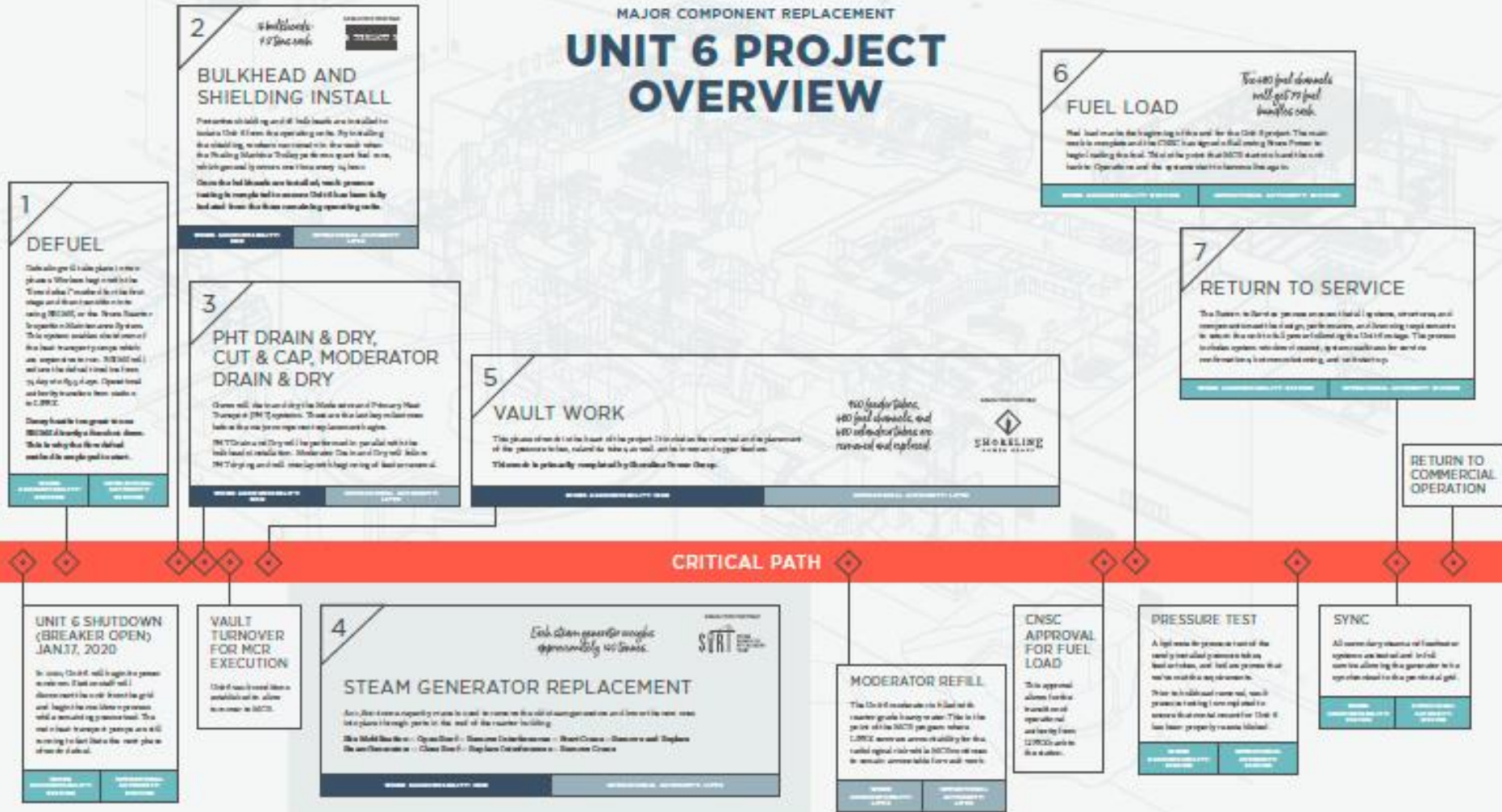
2020

2021

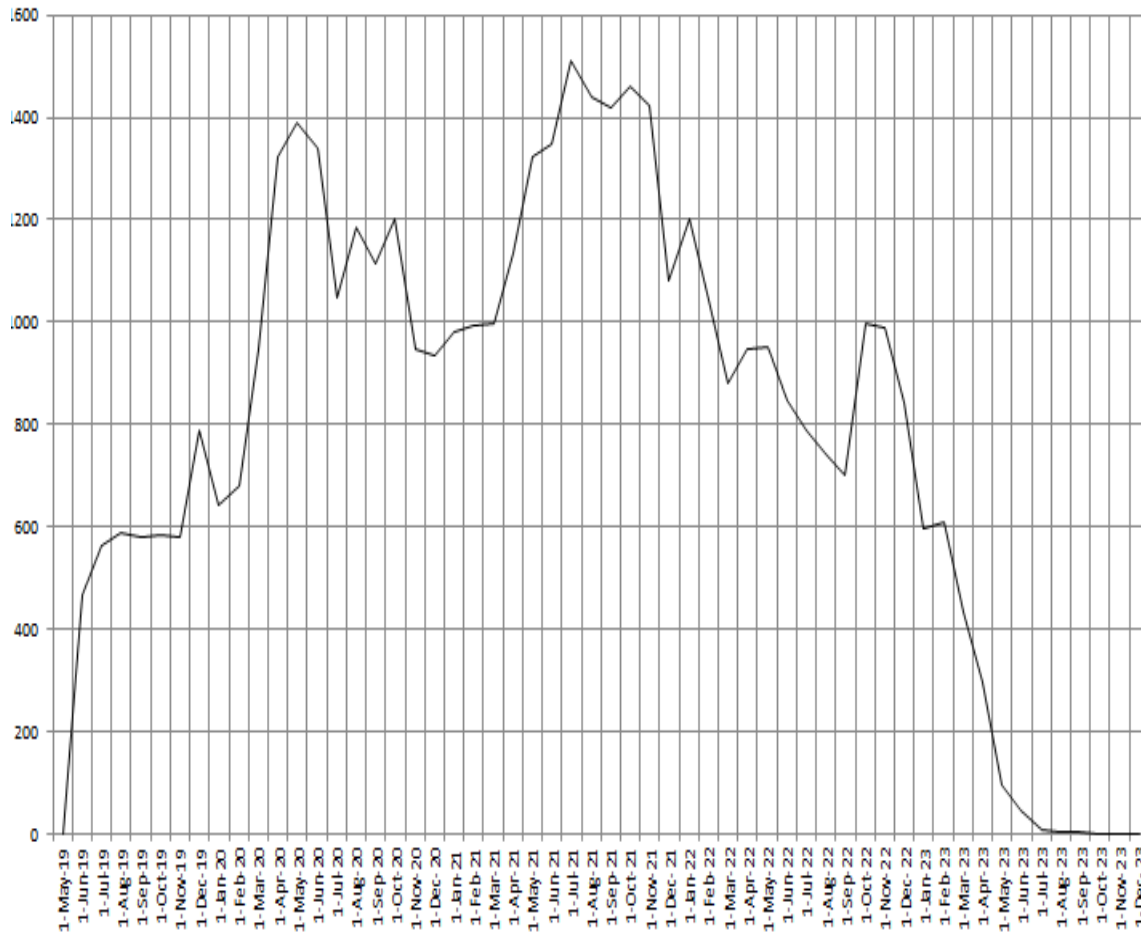
2022

2023

MAJOR COMPONENT REPLACEMENT UNIT 6 PROJECT OVERVIEW

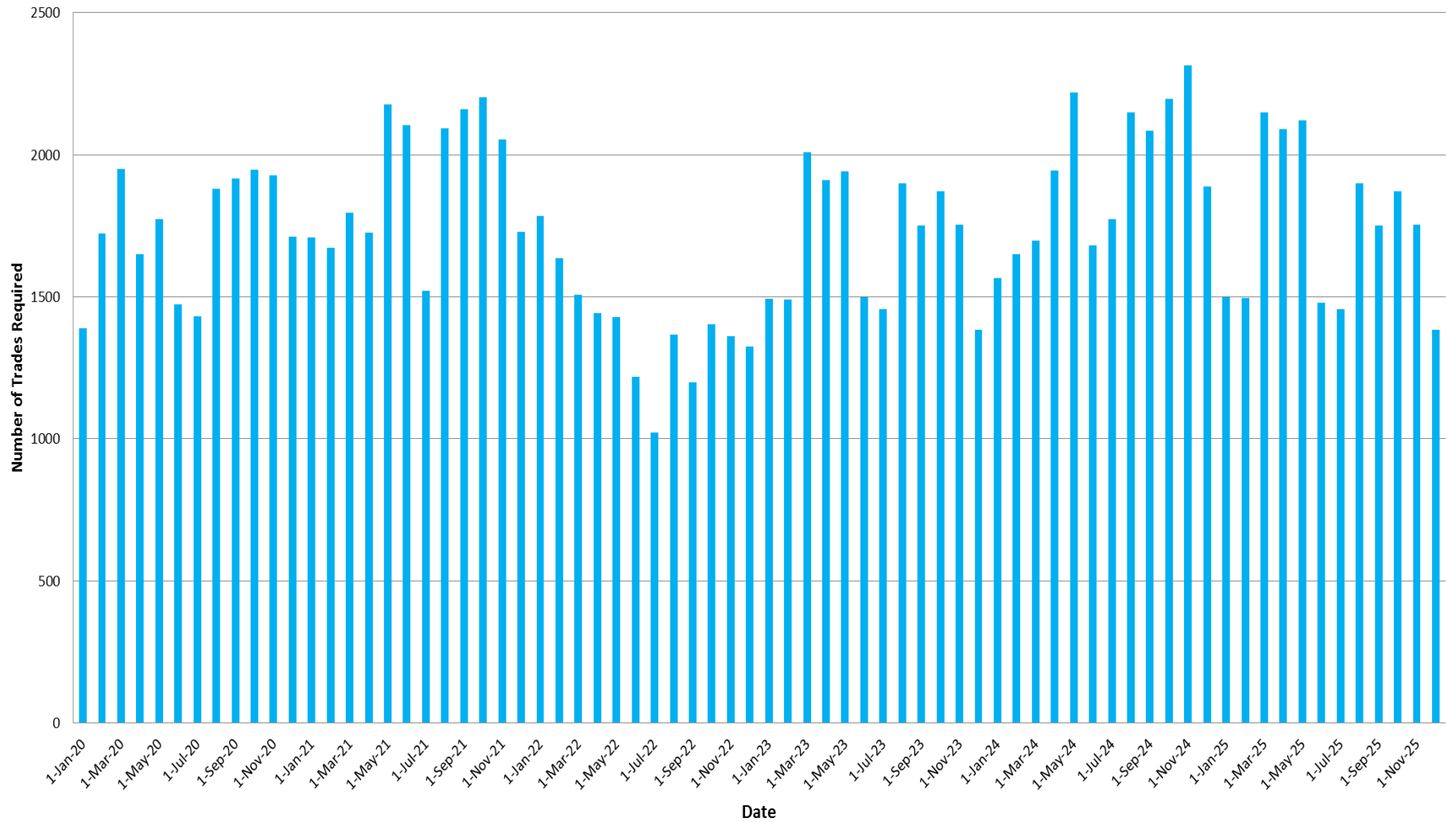


MCR Trades for U6



- U6 trade numbers peak in Q2 2021
- Approximately 1,500 trades required at peak
- This figure does not include additional office and support staff
- As the U6 refurbishment ends, the U3 refurbishment starts

Total Trade Demand Forecasted 2020-2025



Understanding Our Project Workforce

- Most project tradespeople (approximately 75%) reside outside of 100 KM's from the Bruce Power site classifying them as “Travelers”
- Bruce Power relies on travelers to support the local workforce during peak resource periods
- Bruce Power could see upwards of 1,000 travelers during the highest resource periods of the project
- *History shows us travelers remain travelers and a low percentage of individuals convert over to home owners in the specific area*
- *The preference for travelers when residing in the area are month to month room rentals*

MCR Economic & Community Impact



Innovation at work

COMMERCIALY CONFIDENTIAL BUSINESS SENSITIVE

Provincial Economic Impact



Reactor Tooling ATS - Cambridge

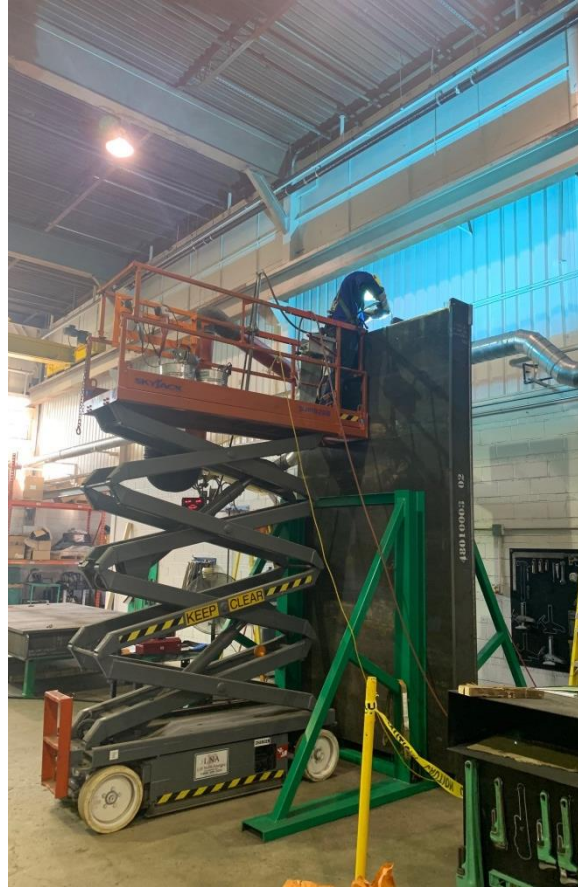
Steam Generators BWXT - Cambridge



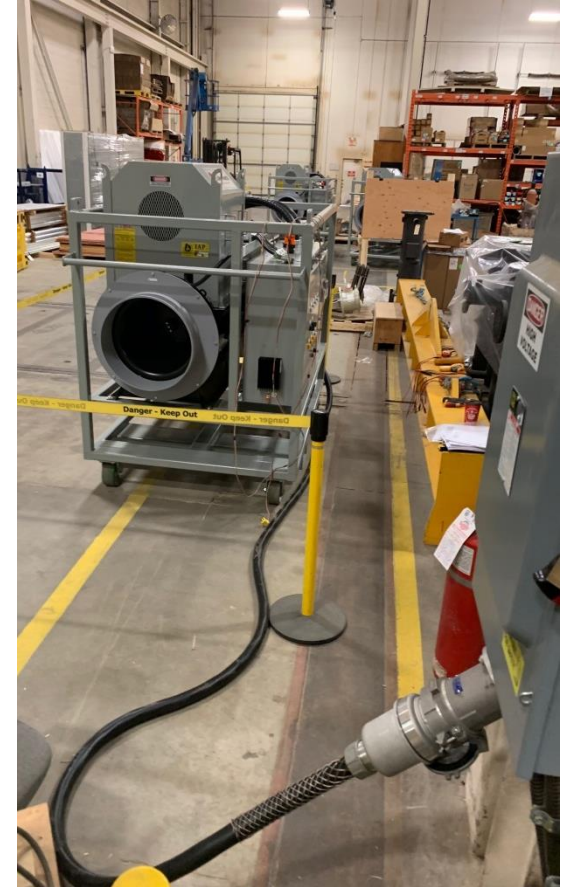
Provincial Economic Impact



Shield Plugs
Brotech
Barrie



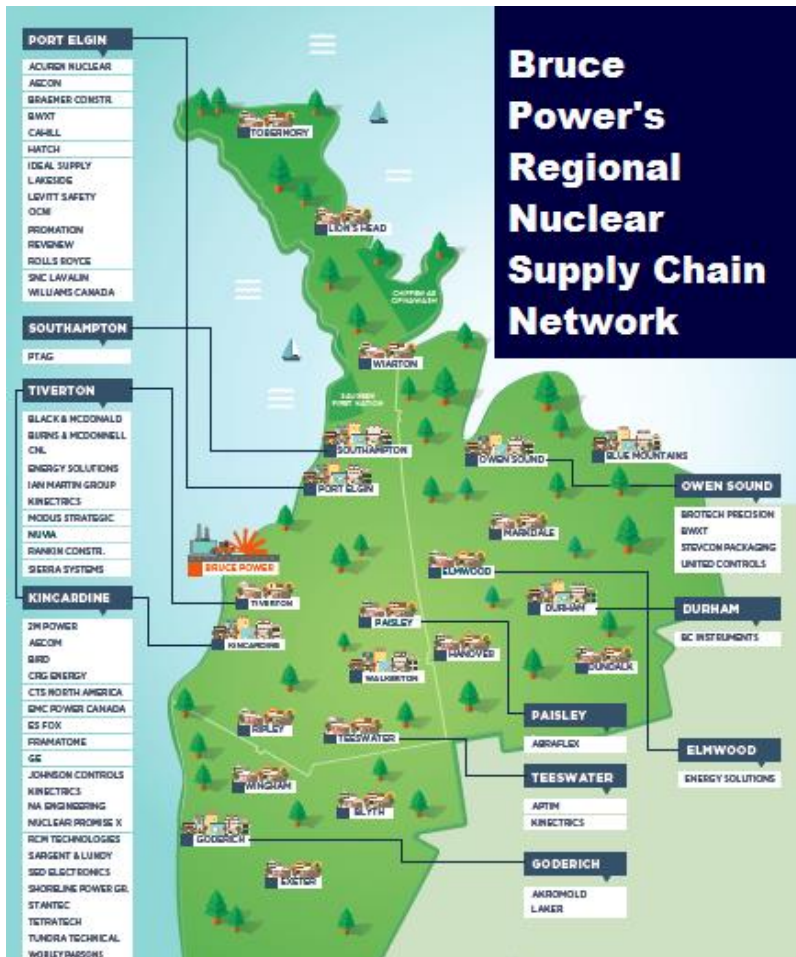
Bulkheads
Black & McDonald
Scarborough



PHT Heater Blower Skids
Thermon Heating Systems
Oakville

Growth in Local Communities

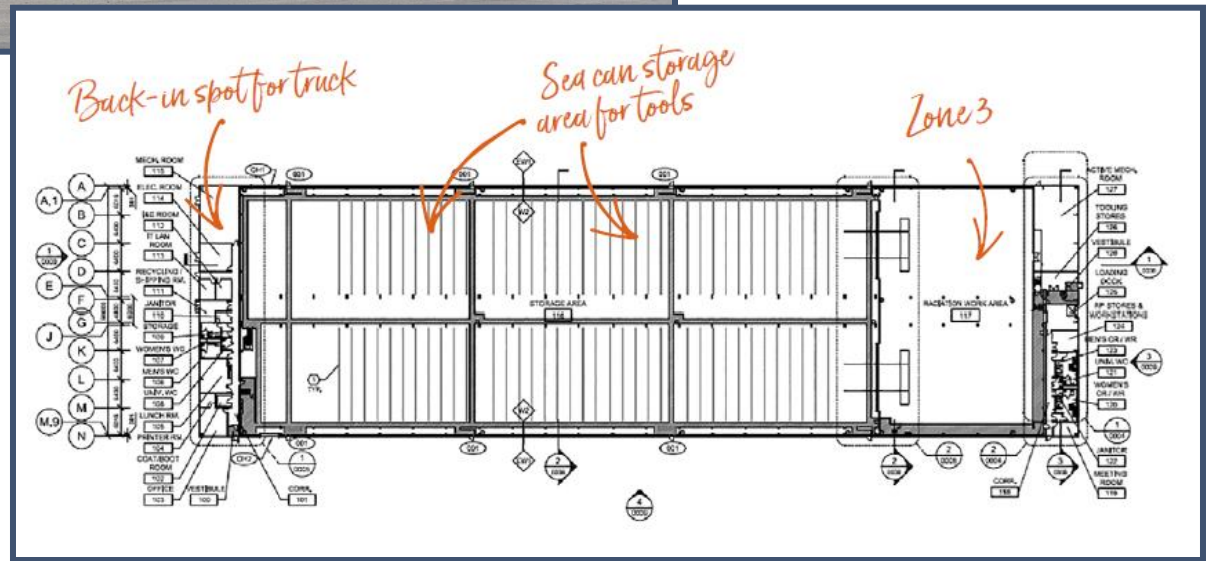
We now have **59 partners** from our supply chain investing in our local communities by opening offices and warehouses, and providing employment opportunities to the workforce in Bruce, Grey and Huron counties.



MCR Training Facility



Central Storage Facility (B44)



Medical isotopes – fighting cancer

- The life extension program helps to secure a long term supply of medical isotopes worldwide which is a growing part of our business
- HSA Cobalt-60 – radiation-based treatment of cancer and other diseases, non-invasive Gamma Knife treatment
- LSA Cobalt-60 produced at Bruce Power is enough to sterilize roughly 100 billion syringes or 10 billion surgical gloves every year
- Bruce Power signs agreements to begin producing Lutetium-177, a medical isotope used to treat prostate cancer



Supporting Local Communities

- *Future Risks: Working with our local communities on potential issues/risks: housing, local support workers, lack of doctors*
- *Charitable Support - Bruce Power donates over \$1.6 million every year to community organizations and events*
- *Nuclear Innovation Institute*
 - iSPACE 620 to begin operating early 2020
 - Focus on Energy Transformation, Environmental Sustainability, New Skills & Knowledge, and Medical Isotopes & Public Health
 - New President – Bruce Wallace – former Chief Innovation Officer with a manufacturing supercluster
 - Founding Members to date Bruce Power, the County of Bruce, Kinectrics, BWXT and ES Fox. More to come.

Questions?